

SSFA comparison

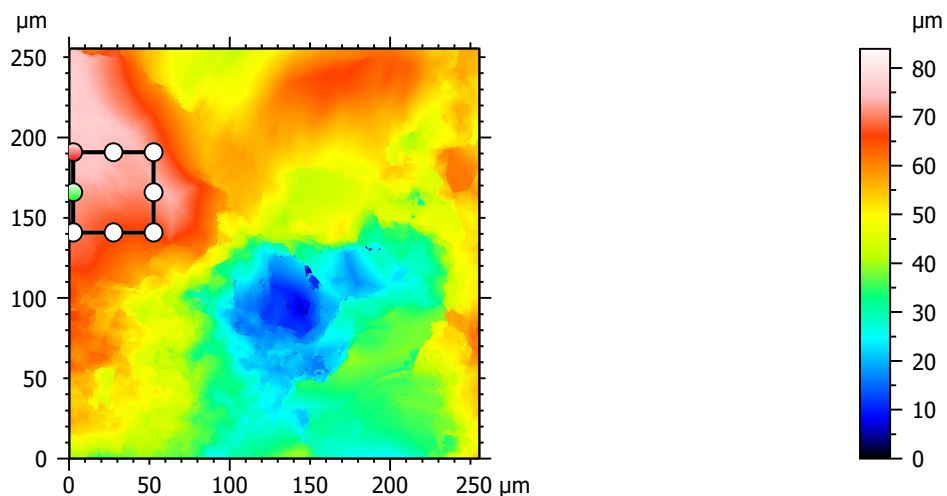
Template to process all lithic surfaces acquired with the Zeiss LSM 800 with the 50x/0.95 objective.

A. Processing

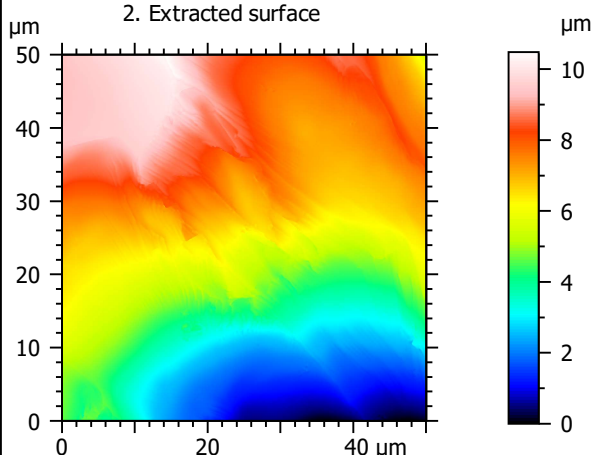
Identity card

Name:	QTZ3-13_LSM2_50x-0.95_20190822_Area1_Topo		
File path:	D:\Data\3Ddata\SSFA\Lithics\Original_surfaces\QTZ3-13_LSM2_50x-0.95_20190822_Area1_Topo.sur		
Created on:	8/22/2019 11:30:07 AM		
Studiable type:	Surface		
Axis:	X		
Length:	255.5	µm	
Size:	3000	points	
Spacing:	0.08519	µm	
Axis:	Y		
Length:	255.5	µm	
Size:	3000	points	
Spacing:	0.08519	µm	
Axis:	Z		
Layer type:	Topography		
Length:	83.92	µm	
Size:	65532	digits	
Spacing:	0.001281	µm	
NM-points ratio:	0.000 % (0 Pts)		

1. Acquired surface

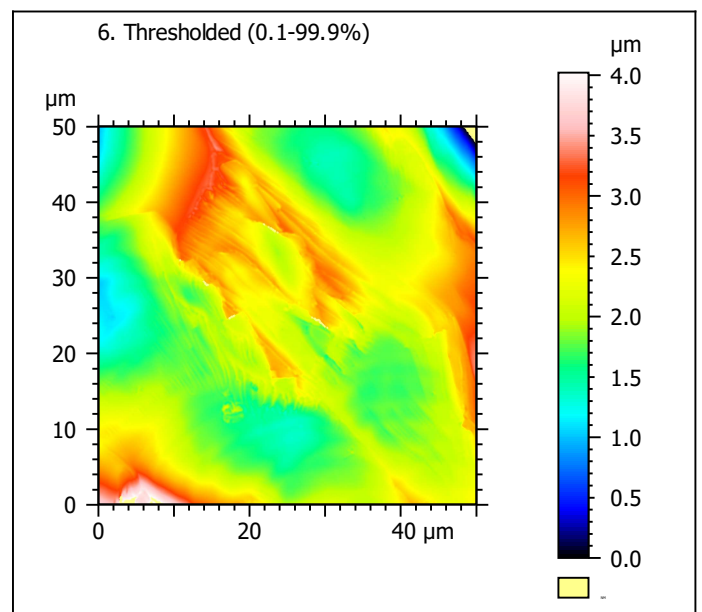
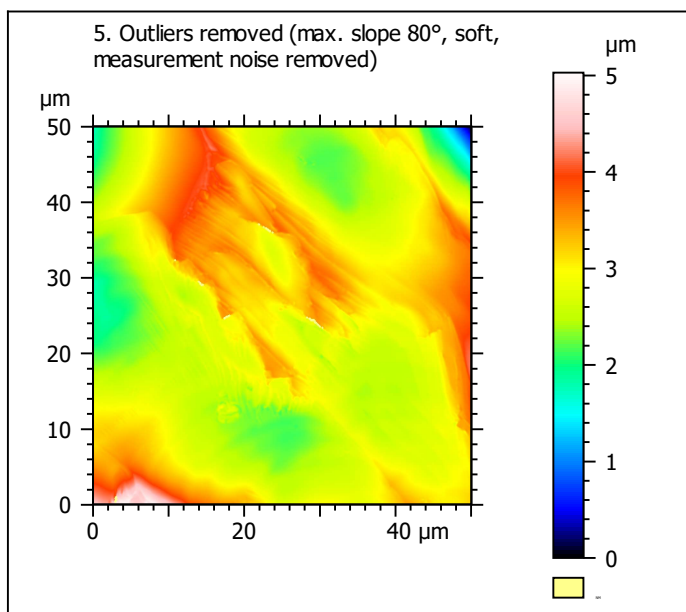
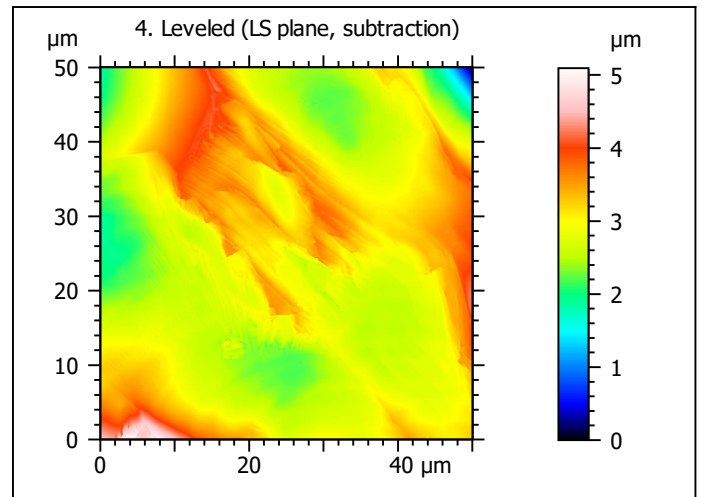
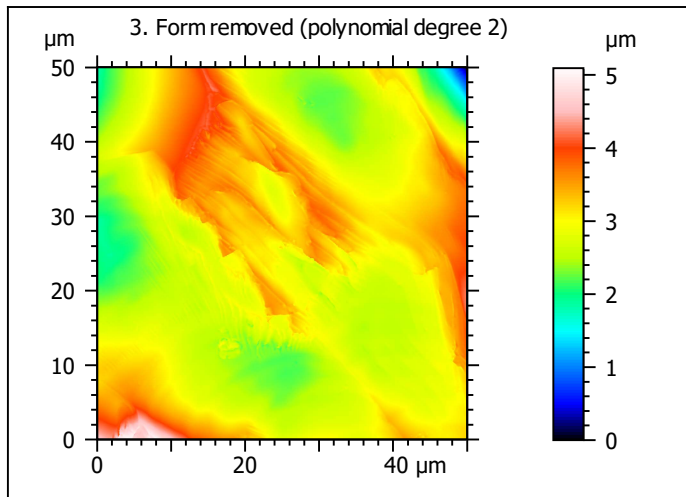


2. Extracted surface



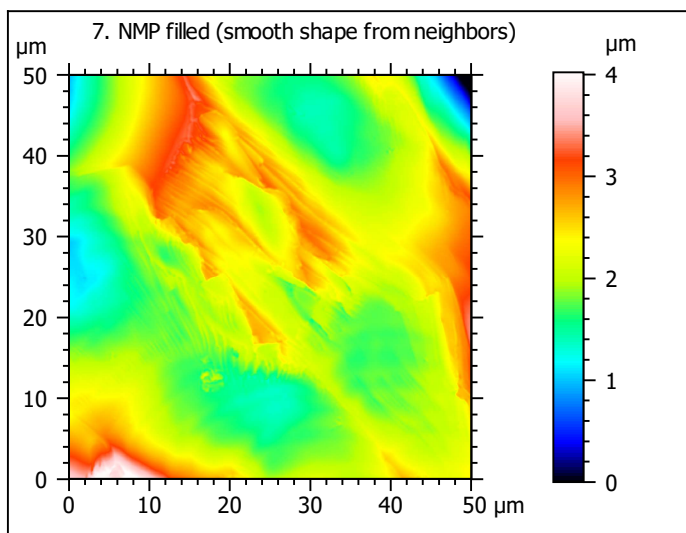
Identity card

Name:	QTZ3-13_LSM2_50x-0...opo > Extracted area		
Axis: X			
Length:	50.00	µm	
Size:	588	points	
Axis: Y			
Length:	50.00	µm	
Size:	588	points	
Axis: Z			
Layer type:	Topography		
Length:	10.48	µm	
Size:	8186	digits	
NM-points ratio:	0.000 % (0 Pts)		

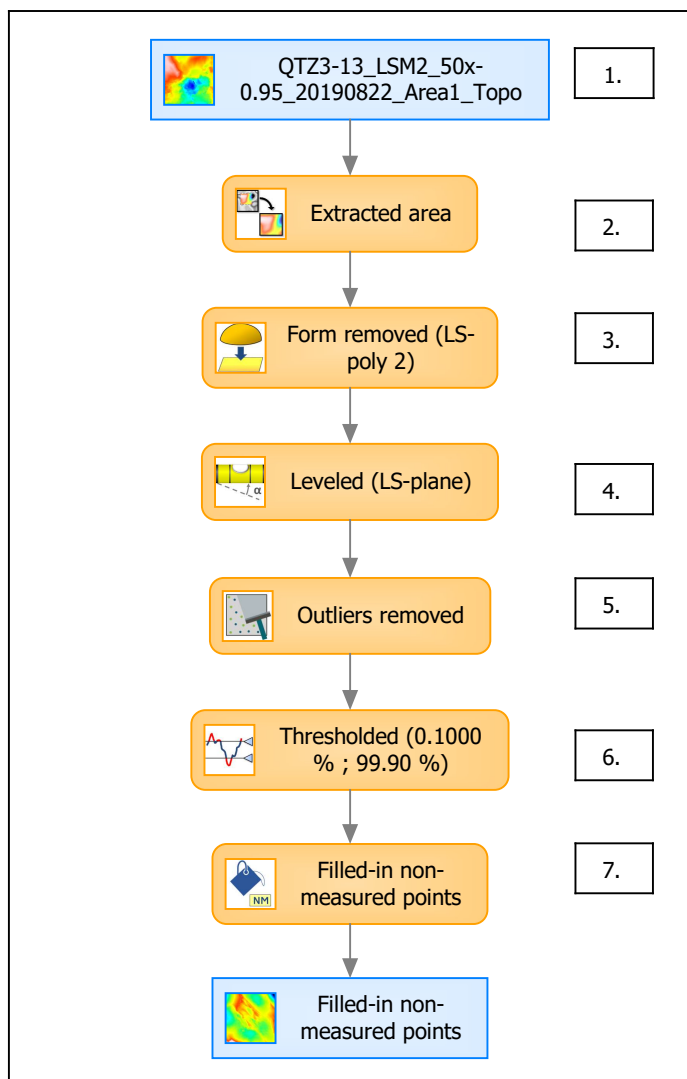


Identity card	
Name:	QTZ3-13_LSM2_50x-0...e) > Outliers removed
Axis:	Z
NM-points ratio:	0.08156 % (282 Pts)

Identity card	
Name:	QTZ3-13_LSM2_50x-0...0.1000 % ; 99.90 %)
Axis:	Z
NM-points ratio:	0.2797 % (967 Pts)



B. Summary



Identity card

Name: QTZ3-13_LSM2_50x-0.95_20190822_Area1_Topo > Extracted ar...resholded (0.1000 % ; 99.90 %) > Filled-in non-measured points

Studiabie type: Surface

Axis: X

Length: 50.00 μm
Size: 588 points
Spacing: 0.08519 μm

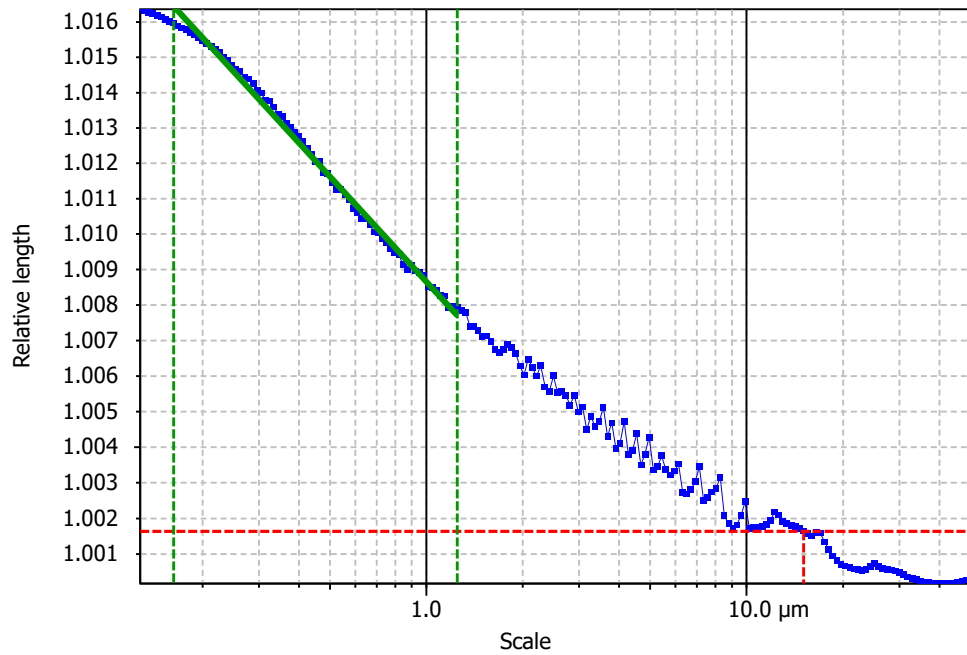
Axis: Y

Length: 50.00 μm
Size: 588 points
Spacing: 0.08519 μm

Axis: Z

Layer type: Topography

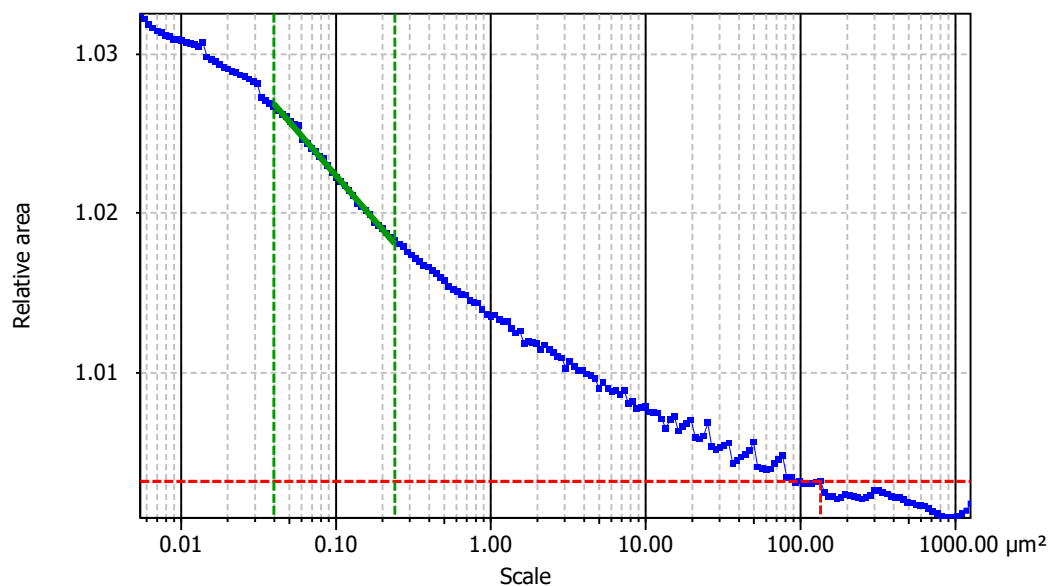
Length: 4.022 μm
Size: 3141 digits
Spacing: 0.001281 μm

**Information**

Method	Length-scale (rows)
--------	---------------------

Parameters

Parameters	Value	Unit	Comment
epLsar	0.004538		Length-scale anisotropy (Sfrax) (1.8 μm, 5°)
NewEplsar	0.01708		Length-scale anisotropy (1.8 μm, 5°)

**Information**

Method	Area-scale (four corners)
--------	---------------------------

Parameters

Parameters	Value	Unit	Comment
R ²	0.9972		Reg. coefficient R ²
Asfc	4.796		Fractal complexity
Smfc	0.08341	μm ²	Scale of max complexity
HAsfc9	0.6360		Heterogeneity of Asfc (3x3)
HAsfc81	1.683		Heterogeneity of Asfc (9x9)